

We have moved!
Unit 2-3 King Edward Rd, Osborne Park
Phone (08) 9244 8888



dental intelligence

Consumables Catalogue

Year ending March 2016



Call (08) 9244 8888

www.dentalintelligence.com.au



Product Code	Description	Price
90-1064-01	0.7 Litre ICX Tablets (50 Packet)	\$76.55
90-1065-01	2.0 Litre ICX Tablets (50 Packet)	\$114.00

23-0872-05	Triplex Syringe Tips (5 Packet)	\$15.80ea	\$79.00pkt
23-0872-10	Triplex Syringe Tips (10 Packet)	\$14.70ea	\$147.00pkt
23-0872-25	Triplex Syringe Tips (25 Packet)	\$13.64ea	\$341.00pkt

034-003-01	Syringe O-rings Small (10 Packet)	\$26.00
035-062-01	Syringe O-rings Large (10 Packet)	\$9.75

14-0416-00	Replacement Water Bottle 0.7 Litre	\$58.00
14-0468-00	Replacement Water Bottle 2.0 Litre	\$266.00

283404	50g Tube Silicon Grease	\$30.00
--------	-------------------------	---------

11-1284-01	Screen for Triple Vacuum Adec 300 & 500 (10 Pieces)	\$33.50
11-1191-01	Screen for Triple Vacuum Adec 200	\$1.30

To March 2016 Consumables Catalogue



Product Code	Description	Price
75-0035-00	Cuspidor Bowl Screen - Surf or White	\$10.50
75-0035-01	Cuspidor Bowl Screen - Surf or White (5 Packet)	\$50.00



28-0503-01	Light Shield - Cascade	\$55.00
28-1166-00	Light Shield - Performer	\$75.50



041-709-00	Light Globe - 6300	\$55.00
041-513-00	Light Globe - Performer	\$50.00



ME-9565	SafeShield for LED (Case of 10 x 10)	\$409.50
---------	--------------------------------------	----------



024-222-01	Tubing, 16mm 10FT Grey	\$291.05
024-222-02	Tubing, 16mm 50FT Grey	\$1,355.00
024-219-01	Saliva Ejector Tubing, 3m	\$341.00



dental intelligence



Product Code	Description	Price
200195	Riskontrol A-Dec Adapter	\$159.50



SA-201664	Riskontrol Classic White (250 Packet)	\$80.00
SA-201665	Riskontrol Classic Blue (250 Packet)	\$80.00
SA-201700	Riskontrol Scented Mint (250 Packet)	\$80.00
SA-201701	Riskontrol Scented Orange (250 Packet)	\$80.00
SA-201702	Riskontrol Scented Liquorice (250 Packet)	\$80.00
SA-201703	Riskontrol Scented Aniseed (250 Packet)	\$80.00
SA-201704	Riskontrol Scented Berry (250 Packet)	\$80.00



SA-403026	Sopix Sensor Size 1 Sheaths (500 Packet)	\$486.00
SA-403027	Sopix Sensor Size 2 Sheaths (500 Packet)	\$486.00



SA-700339L	PSPIX Protective Bag & Cover Size 1 (250)	\$149.00
SA-700340L	PSPIX Protective Bag & Cover Size 2 (250)	\$149.00
SA-700341L	PSPIX Protective Bag & Cover Size 3 (250)	\$139.00



SA-700342L	PSPIX Protective Bag Size 0 (250 Packet)	\$76.55
SA-700343L	PSPIX Protective Bag Size 1 (250 Packet)	\$76.55
SA-700344L	PSPIX Protective Bag Size 2 (250 Packet)	\$76.55

Please include product code with order. Email: sales@diwa.com.au • Fax: (08) 9244 4422 • Ph: (08) 9244 8888

To March 2016 Consumables Catalogue



Product Code	Description	Price
SA-700201	PSPIX Accessories Starter Kit	\$615.00

Size 0

22 x 31mm
628 x 885 pixels
1085 KB

Size 1

24x 40mm
605 x 1143 pixels
1529 KB

Size 2

31 x 45 mm
896 x 1171 pixels
2026 KB

Size 3

37 x 54 mm
771 x 1542 pixels
2322 KB

SA-700200	PSPIX Imaging Plate Starter Kit 10 Pce (2x Size0, 2x Size1, 5x Size2, 1x Size3)	\$1440
-----------	--	--------

SA-700178	PSPIX Imaging Plate Size 0 (6 Packet)	\$865.00
SA-700179	PSPIX Imaging Plate Size 1 (6 Packet)	\$865.00
SA-700180	PSPIX Imaging Plate Size 2 (6 Packet)	\$865.00
SA-700181	PSPIX Imaging Plate Size 3 (6 Packet)	\$865.00



SA-700042	Sensor Positioning Kit	\$655.00
-----------	------------------------	----------



SA-700196	Positioning Kit for PSPIX	\$454.50
SA-700195	Bitewing Positioning Set for PSPIX	\$389.50



SA-403023	Sopro 617 Sheaths (500 Packet)	\$491.00
SA-403017	Sopro 717, Life & Care (500 Packet)	\$491.00



Product Code	Description	Price
WH-W3224001	Lisa MB & 500 Series Bacteria Filter	\$70.00



WH-F4605041	Lisa 500 Door Seal (Grey)	\$111.50
WH-F4605031	Lisa MB Door Seal (Black)	\$101.50

WH-X0503031	1000 Cycle User Kit, Lisa 500 (Includes 1 x Door Seal, 3 x Dust Filter & 3 x Bacteriological Filter)	\$407.00
-------------	--	----------



WH-T8002051	W&H Helix Test Kit (250 Test Strips)	\$291.50
-------------	--------------------------------------	----------



WH-02680500F	Assistina Oil, Cleaner & Filter Pack	\$292.00
--------------	--------------------------------------	----------



WH-02680200	Assistina Cleaner (1 Litre)	\$80.00
-------------	-----------------------------	---------

WH-06691600	Assistina 3x3 Activefluid (1 Pack)	\$62.50
-------------	------------------------------------	---------

WH-06872300	Assistina 3x3 Activefluid (6 Pack)	\$266.00
-------------	------------------------------------	----------

To March 2016 Consumables Catalogue



Product Code	Description	Price
WH-06691500	Assistina 3x3 Service Oil (1 Pack)	\$72.50
WH-06872200	Assistina 3x3 Service Oil (4 Pack)	\$225.00



WH-MD-400	400 F1 Service Oil	\$65.00
-----------	--------------------	---------



WH-02036100	Spray CAP Chuck System	\$8.50
WH-02229200	Spray CAP High Speed	\$8.50
WH-02038200	Spray CAP Low Speed	\$8.50



WH-02670500	Assistina 301P Exhaust Filter	\$94.50
-------------	-------------------------------	---------



WH-02694500	Assistina 301P Fleece Tray Liner (Pkt 20)	\$37.50
-------------	---	---------

WH-02695710	Nose Cone O-rings – 1 Piece only* 2 Required \$3.75 each	\$7.50
-------------	---	--------



WH-A8105000	LisaSafe Consumable Kit (2 Rolls of Labels & 2 Rolls of Ink)	\$153.55
-------------	--	----------



Product Code	Description	Price
CT9	Suction Tip CT 9 (Pkt 3)	\$24.75
CT11	Suction Tip CT 11 (Pkt 3)	\$24.75
CT17	Suction Tip CT 17 (Pkt 3)	\$24.75
CT20	Suction Tip CT 20 (Pkt 3)	\$24.75
CT21	Suction Tip CT 21 (Pkt 3)	\$24.75
CT22	Suction Tip CT 22 (Pkt 3)	\$24.75



C15	Adaptor for Saliva Ejector (Fits into the 17mm and 11mm terminal)	\$11.22
-----	---	---------



C16	Reducer (To connect 11mm tips to the 17mm terminal)	\$2.20
-----	---	--------



C240317	Filter Element for 0040	\$48.40
---------	-------------------------	---------



C1130	Filter Element for 0011B (Used on 0011B tip supports and all models of Aspi Jet)	\$27.50
-------	--	---------



C-551400	Filter Element for 0055 Hanger	\$30.36
----------	--------------------------------	---------



C12028	Air Filter for Max Canister (Should be replace approximately every 15 days)	\$6.49
--------	---	--------

To March 2016 Consumables Catalogue



Product Code	Description	Price
C-040502	Funnel Spittoon	\$18.70



C-201544	Filter Turbosmart	\$162.80
----------	-------------------	----------



K-168563	Air Inlet Filter for Compressor (One Filter per cylinder. Should be replaced every 6 months)	\$48.95
----------	--	---------



C11015G	Suction Terminal Small - 11mm Grey	\$42.35
C11014G	Suction Terminal Large - 15mm Grey	\$42.35



C-11013S	Silicone Tubing - 11mm Grey	\$42.02/m
C-11012S	Silicone Tubing - 17mm Grey	\$42.02/m
C-11013G	Spiral Tubing - 11mm Grey	\$31.46/m
C-11012G	Spiral Tubing - 17mm Grey	\$31.46/m

Special order: Black or white tubing available. Call (08) 9244 8888



C-040720	Pulse Cleaner for Suction	\$122.10
----------	---------------------------	----------



M-060970	Puli-Jet Gentle Disinfectant	\$46.20
----------	------------------------------	---------



M-040825	Antifoaming Disinfection Tablets (50 Tablets)	\$86.35
----------	---	---------

M-040727	Lubri-Jet - Silicone Lubricant Drops	\$29.15
----------	--------------------------------------	---------



dental intelligence

Choose your Handpiece Package

**BUY 3x
AT SPECIAL
RATES**

Turbine Packages

Includes: 3 x Highspeed Turbines

NEW syneq^{VISION}

Reliable, ergonomic and outstanding quality

The premium instrument line in the Synea series. Innovative and long service life guarantee excellent treatment results for restoration and prosthetics.



**Synea Vision
TK97L, TK98L, TK-100L**



Contra-Angle Packages

**Includes: 3 x Contra Angles,
1:1 Transmission Ratio**

**Synea Vision
WK-56LT, WK-56 LTS**



Speed Increasing Contra-Angle Packages

**Includes: 3 x Contra Angles,
1:5 Transmission Ratio for 99 head
1:4.5 Transmission Ratio for 93 head**

**Synea Vision
WK-99LT, WK-99LTS,
WK-93LTS, WK-93LT**



More Handpiece Options

**W&H CONTRA ANGLES ARE THE PERFECTION
COMBINATION WITH THE NEW A-DEC EA-53 LED
ELECTRIC MOTOR**

Light, powerful quiet, and full of tactile feeling. It's advanced motor for a full selection of unitized attachments for highspeed gross reduction and lowspeed precision finishing, to specialty endodontics.

Note: A-dec Deluxe touchpad required.



synea^{FUSION}

Outstanding price-performance ratio

Uncompromising user comfort with proven Synea quality. The series with top quality and maximum economy. Also available to suit Kavo & NSK connections.



**Synea Fusion
TG-97L, TG-98L**



**Synea Fusion
WG-56LT**



**Synea Fusion
WG-99LT**



PROXEO PROPHYLAXIS CONTRA ANGLE PACKAGE

With Proxeo, W&H offers a compact, easy to handle solution for everything you need, no matter whether it is cleaning, polishing or fluorocating.

NEW a|egra

Reliable, efficient and precise

Algebra handpieces from W&H are reliable partners for daily use in your dental practice. Experience maximum efficiency during use combined with maximum safety for you and your patients.



**Algebra
TE-97LQ, TE-98LQ**

Note: Requires W&H RQ-54 generator coupling for LED to operate.



**Algebra
WE-56, WE-56T**

Now A-dec and W&H offer more handpieces choices than ever before, call your A-dec representative to configure your perfect handpiece solution.

Call 1800 225 010



ALEGRA STRAIGHT HANDPIECE PACKAGE

Straight handpieces with twist tension chuck system for quick and easy bur change, for handpiece burs \varnothing 2.35 mm.



dental intelligence

Prices start from \$20,800

A-dec 200™

Proven. Efficient. Smooth

Now available with a delivery system and LED light upgrade.

Ask your local A-dec Territory Manager for further details

Reliability in a complete package.

Genuine A-dec for any budget.

Designed and engineered to withstand years of constant use, A-dec 200 is a technology-ready solution that includes dental chair, delivery system, assistant's instrumentation, dental light, and support centre with cuspidor.

- Double-articulating headrest with easy adjustment.
- Locking 2-position swivelling armrests for easy patient entry and exit.
- Reliable hydraulic-lift system for ultra-quiet, smooth chair movement.
- 300-watt power supply for all your ancillary integration.
- Includes total touchpad control.



A-dec 300™

Smart. Sensible. Simple

Proven performance for all budgets.

A-dec 300 takes sleek to a whole new level.

Although A-dec 300 appears compact, it is big in versatility and integration. By combining the Radius®-style delivery options and left/right assistant's arm - including a wide range of ancillary possibilities - this is the smart system for every budget. As you grow, so can your dental equipment.

The A-dec 300 chair is available in seamless or sewn upholstery.

- Simplified design with fewer moving parts for reduced maintenance and a long product life.
- Radius-style delivery option for versatile left/right compatibility.
- Chair-base mount support centre for a small, sleek footprint.
- Seamless ancillary integration allows equipment to meet the changing needs of dentistry.



All A-dec Chairs have 5 Years Warranty For Your Piece of Mind†

Please include product code with order. Email: sales@diwa.com.au • Fax: (08) 9244 4422 • Ph: (08) 9244 8888

A-dec 400™

Accessible. Strong. Style

Contemporary design in a versatile package.

Modest luxury with proven reliability. A-dec 400 marries form and function for superb patient and doctor comfort and access. The ambidextrous compatibility of the Radius delivery system brings flexibility and productivity to every treatment room. And when you consider its unique load-bearing pivoting armrests, contemporary chair design, and 60° swivel, you will see why A-dec 400 is an exceptional value.

- Ultra-thin backrest enables you to tuck your knees under the chair for optimal ergonomic access.
- Robust two-position armrest design gives secure patient support, and stows easily out of the way for direct access by the dental team.
- Vertical range of 349-794mm accommodates stand-up dentistry.
- Radius-style delivery and support modules rotate quickly and easily around the chair for complete left/right compatibility.



A-dec 500™

Premium. Graceful. Comfort

When you need the best. A-dec 500 is dentistry's hallmark for treatment room comfort and performance. A-dec 500 gives you optimal ergonomics supported by a full range of integrated possibilities. And with a chair ride that is exquisitely smooth, you will see why A-dec 500 is unmatched in its graceful innovation.

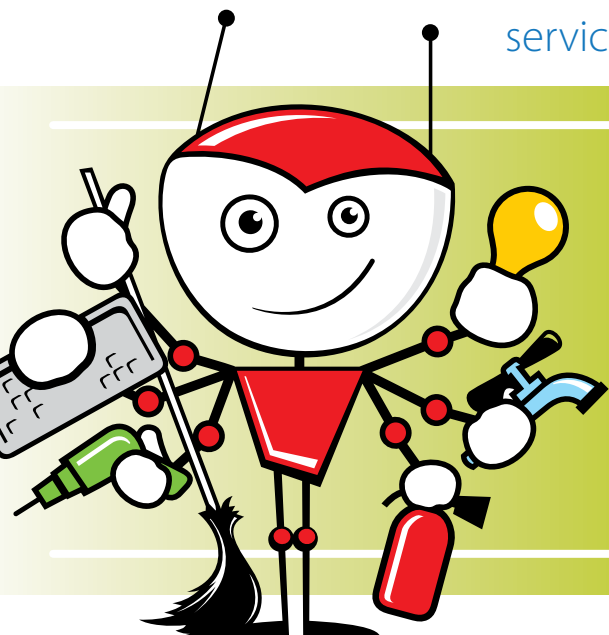
- Outstanding comfort and support, plus an ultra-thin 25mm backrest for optimal oral cavity access and increased leg room.
- Seamless ancillary integration to meet the changing needs of dentistry.
- Anatomically shaped contours reduce patient pressure points.
- Self-contained 2-litre water bottle reduces risk of cross-contamination.
- Exceptional range of motion plus low "down" position improves access, visibility and posture.
- Integrated touchpad to give you easy control of chair, cuspidor, and dental light.
- Control head pivot points provide superb instrument positioning.



* RRP price includes chair, delivery system, assistants instrumentation and light.

† A-dec warrants A-dec dental chair cylinders, both lift and tilt, for 5 years from the date of purchase of chair or cylinder.

Looking for the right
service person and technician?



SPECIAL RATES FOR NEW CHAIR PURCHASES

Dental Intelligence, A-dec's newest dealership can provide WA Dental Practices with expert advice, repairs and maintenance on all their dental equipment new and old.

Find out how we can help you avoid cancellations, provide reliable repairs and maintain your equipment to the highest level.

Our Technician, Stewart Redman has been with Dental Intelligence almost since its inception. Prior to that he headed the service department at Henry Schein/Hallas, Perth, Western Australia. He has worked for Smiths Industries Medical Systems in the UK, as a Field Service Engineer maintaining Medical & Dental equipment.

Stewart studied Electronics and Computing at Mid-Cheshire College and Electronics at Staffordshire University and is highly skilled in bench testing and repair of electronics for commercial and military use.

He is well known in the industry as a knowledgeable and reliable technician. He can service most dental equipment.

Authorised service agents for:



dental intelligence

Call us today (08) 9244 8888

www.dentalintelligence.com.au

F: (08) 9244 4422
Unit 2-3 King Edward Rd, Osborne Park WA 6017



One Stop Shop for all your Dental Practice needs

quality
class
value
reliability
experience

Affordable custom practice
fitouts and distributors of



Equipment servicing



Look no further
Call (08) 9244 8888

F: (08) 9244 4422
E: admin@dentpro.com.au

www.dentpro.com.au www.dentalintelligence.com.au



dental intelligence

Consumables Catalogue

Year ending March 2016

Ph: (08) 9244 8888

Fax: (08) 9244 4422

sales@diwa.com.au

Unit 2-3 King Edward Rd, Osborne Park WA 6017
PO Box 1980, West Perth WA 6872



Prices subject to change or while stocks last. Every effort is made to ensure advertised stock is available, but due to factors beyond the control of Dental Intelligence Pty Ltd not all products advertised in this catalogue may be available at time of order. Product images are for illustration purposes only. **All quoted prices include GST. E&OE.**