



## Old home transforms into new practice

By Meagan Shand, BSc (Health Promotion)

**D**r Norbert Radny had patient comfort in mind when he chose to relocate to a residential building just 300 metres from his 30-year-old practice in a busy retail shopping centre. He soon discovered, however, the biggest challenge came with trying to gain Council approval to transform the old home to commercial and medical usage.

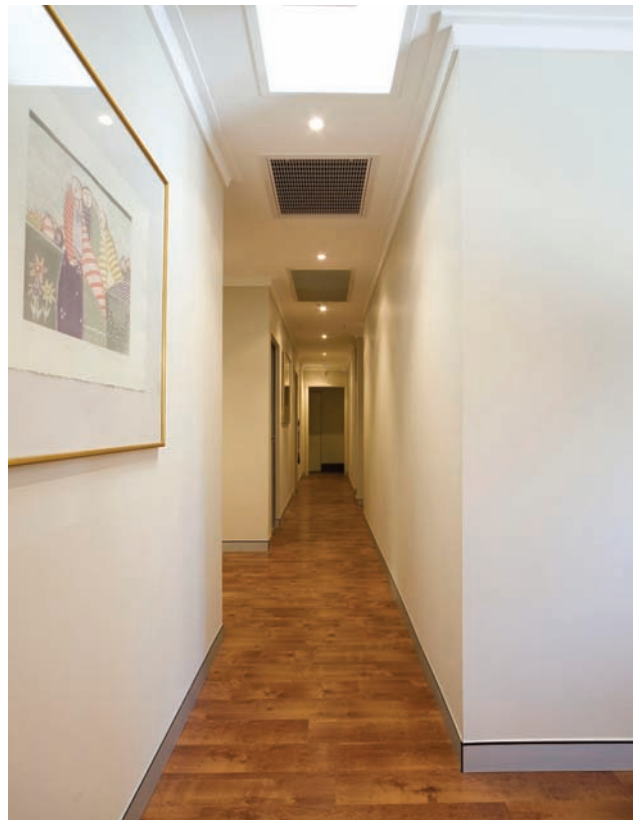
“We chose the residential building opposite our existing practice to create the least disruption for our patients, and so they could find the new premises easily,” Dr Radny said. “In fact, we were able to point out the new location from our old surgery, which was located on the second floor of the adjacent, Garden City Shopping Centre.”

Shifting from a squeeze 70 square metres to a space three times the size, the new Specialist Periodontic practice in Booragoon, WA now features three spacious surgeries, which are more conducive to the periodontal therapy and surgical implant work the practice focuses on. The practice supports nine staff: two specialist periodontists, owner Dr Norbert Radny and Dr Peter Kerrisk; three Dental Therapists, two nurses and two office staff.

Staff say they are more organised in the new practice, which has been designed to optimize access and functionality. There is a large, easy access reception, with level floors, wide doorways and corridors and a wheel chair accessible public toilet. At the centre of the practice is a very roomy 17

square metre sterilisation space, with a large walk in cupboard, creating ample room for storage, cleaning and sterilization. Staff also have access to a big home-sized kitchen, toilet and shower, supporting progressive healthy worksite practices. Outside, there is a large double lock-up garage and ample parking for patients.

Project Manager and dental fit-out specialist, Bill Elsegood, said “because the house had large bedrooms, it was relatively easy to convert it to superior-sized surgeries and a roomy reception area and waiting room, giving the practice a great feeling of spaciousness, light and professionalism. Patients associate a modern fit-out with modern techniques, comfort and better service,” he said.



The impact of the modern spacious look is confirmed by the positive feedback received from patients, who frequently comment on the “lovely clean lines and colour coordination”. The walls are coordinated in modern red vines and light rice Dulux colours, contrasting with cedar wood paneled floors throughout. The energy shifts in the main surgery, which features an incandescent painting by WA Aboriginal Artist Benjamin Bushman, matched with a modern red leather armchair in the corner of the room. The results are very satisfying.

According to Dr Radny, the main reason the project has been so successful was the continual desire of the builder and project manager, Bill Elsegood, to deliver on budget and on time. “Bill provided a comprehensive quote outlining every aspect of the project, with





detailed costings for each facet of construction, supported by up-to-date project reports at every stage of building; there were no hidden or added costs. Without the team leadership from somebody like Bill, projects such as mine simply don't proceed smoothly," he said.

In this case, like most projects, accurate costings and project management were pivotal for success. Dentpro were able to manage the building approval process with local council and ensure strict adherence to the Building Code of Australia and Energy Efficiency requirements such as glazing and sprinkler systems for fire protection, were met. Mr Elsegood cautioned, that if you are looking to convert a residential home to a practice, be sure that the fit-out company you choose has a good understanding of Council regulations and are able to undertake structural changes. "Many fit-out tradesmen are not builders and are not able to legally undertake



## Summary

### The Practice

Principal	Dr Norbert Radny
Practice	Radny Periodontics
Type of Practice	Specialist Periodontics
Location	Booragoon, Perth, Western Australia
Size	210 square metres
No of chairs	3

### The Team

Design	Ego Squared Interior Design Consultants
Senior Designer	Natasha Connor
Construction	Dentpro - Dental, Medical & Commercial Fit out specialists
Project Manager	Bill Elsegood (Registered Builder)

### Equipment

Dental Units	Pelton & Crane Spirit 3000 Series
Sterilisation	Cominox Steri Clave
Compressor	Bambi VTS 150D
Suction	Cattani TurboSmart
Software	Omega Blum

structural changes to premises,” he said. “Because we are registered builders, we were able to demolish and organize car-parking areas with asphalt/ concrete, as well as deal with retaining walls, soak wells and drainage requirements. Once we got local Council approval, we were able to complete the project within 3 months”.

Dr Radny summarised by suggesting that if you are looking to undertake a big project like this, make sure you have a very clear understanding of your basic requirements before selecting your location, building and builder. What you think you want today, may change tomorrow and change can be an expensive exercise.

